

# PROTECH NH-270(LP)

A polyurea designed for waterproofing with excellent workability using designated low-temperature and pressure equipment

'PROTECH NH-270(LP)' is a polyurea designed for waterproofing with superior workability to the traditional ones. With designated low-temperature and pressure equipment, it provides fast drying and excellent physical properties compared to the traditional polyurethane.

Fast drying, water resistance, durability, elongation, impact resistance, KS standards



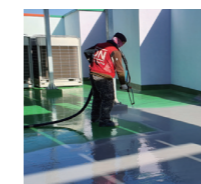
## PROTECH NH-270(LP) Polyurea designed for waterproofing with KS F 3211 Certificate

PROTECH NH-270(LP) is a polyurea designed for waterproofing with **KS standard Certificate (KS F 3211)** which has **excellent impact resistance, cold resistance and durability**.

### Usage

- Waterproofing and anti-corrosion for concrete structures
- Flooring and rooftop waterproofing for buildings

### Feature



**Excellent workability**  
Expecting standard quality and excellent workability with designated equipment



**Fast drying and excellent physical properties**  
Excellent elasticity, elongation, impact resistance, water resistance, durability and adhesion



Obtained KS standards  
Reliable product with first class certificate KS F 3211



### Designated equipment with low-temperature and pressure



PROTECH N-10LP



Competitor's

Manufacturer	Competitor 1		Competitor 2	NOROO
Equipment	XP-2	E-10HP	Another	PROTECH N-10LP
Power		220V		220V
Feature	High-temperature and pressure, Standard	High-temperature and pressure, Small	Unstable quality, Light weight	Low-temperature and pressure, Light weight
Usage	Large construction site	Small construction site	Small construction site	Small construction site
Price	High	Mid to high	Mid to low	Value product

### Physical property test

#### Impact resistance test

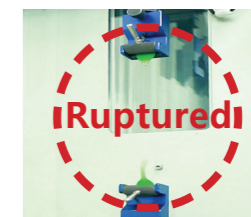


General urethane product



PROTECH NH-270(LP)

#### Tensile test



General urethane product



PROTECH NH-270(LP)

### Specification

Paint type	2K Polyurea intermediate coating			Solid volume ratio	99%
Drying time	5°C	20°C	30°C	Theoretical coverage	Approx. 2.2 kg/m <sup>2</sup> (Based on 2mm)
Set-to-touch	Within 1 minute	Within 1 minute	Within 1 minute	Color	Green, gray, other ordered colors
Dry-through	Within 2 hours	Within 1 hour	Within 1 hour	Mixing ratio	Base(A)/Hardener(B) = 100/100(V)
Thinner	Not applicable			Shelf life	6 months (5°C~35°C indoor storage)
Specific gravity	Approx. 1.05(Mixed)				